

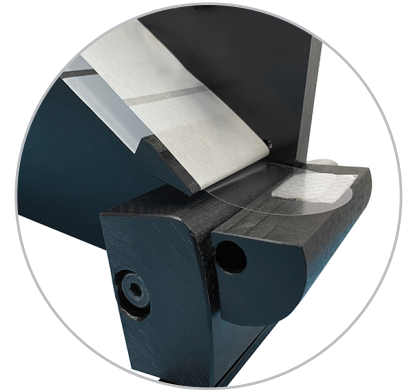
The Tabber

A TAB AND WAFER SEALING MACHINE

EdgeTec
AUTOMATION



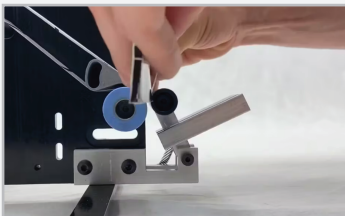
Envelope Sealing Configuration



Box Sealing Configuration

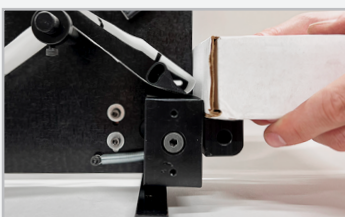
The EdgeTec Tabber is a tab and wafer sealing machine available as a box or envelope sealer.

Machine operation is simple. The user presses or inserts the item into the machine's application area, and the machine wipes the self-adhesive tab to the product's edge. When the user removes the product the machine's photo-optic electronic sensor automatically advances the next wafer.



Envelope Sealer

The EdgeTec Tabber Envelope Sealer features rubber rollers to apply firm pressure to tabs, ensuring good adhesion.



Box Sealer

The EdgeTec Tabber Box Sealer features a large flat platform for easy operation.



Run your preferred tab or wafer style.

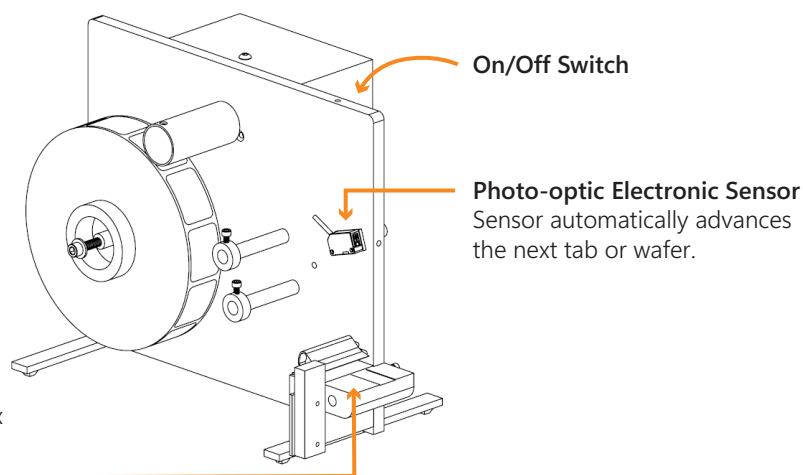


Easy to learn.
Quick to operate.



Dispenses and smoothly applies tabs and wafers.

Box Tabber



Box Platform

A large platform makes box positioning and machine operation easy and simple.

On/Off Switch

Photo-optic Electronic Sensor
Sensor automatically advances the next tab or wafer.

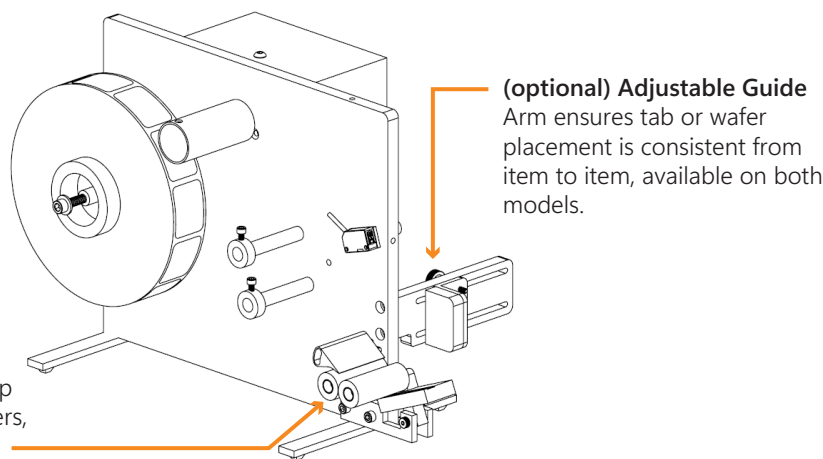
Any tab or wafer style

Round, square, rectangle, hourglass, clear, white, transparent - use what works best for you!

Easy reloading

The open design means simple, easy to follow tape reloading and threading.

Envelope Tabber



Rubber Rollers

Rollers apply firm, non-slip pressure to tabs and wafers, ensuring good adhesion.

(optional) Adjustable Guide
Arm ensures tab or wafer placement is consistent from item to item, available on both models.

Modify Feed Length

Feed length is easily modifiable for swapping between tab sizes.

Tabber Specifications

Machine Type	Variable size wafer/tab feeding machine
Tab/Wafer Styles	Round, Square, Rectangle, Hourglass White, Transparent, or Clear.
Tape Sizes	1/2" to 2"
Machine Dimensions	14" x 8" x 12.75"
Machine Weight	10 lbs
Machine Placement	Tabletop placement
Electrical Requirements	110 VAC, 50/60Hz, 1 Phase OR 220VAC 50/60Hz, 1 Phase Power

Optional Features

Adjustable Guide	An adjustable guide arm ensures tab or wafer placement is consistent from item to item, available on both models.
-------------------------	---